

# Qinhuangdao China

## 2019



The Publicity Department of CPC Qinhuangdao Municipal Committee  
The Information Office of Qinhuangdao Municipal People's Government

It is the sole city in China named after an emperor.

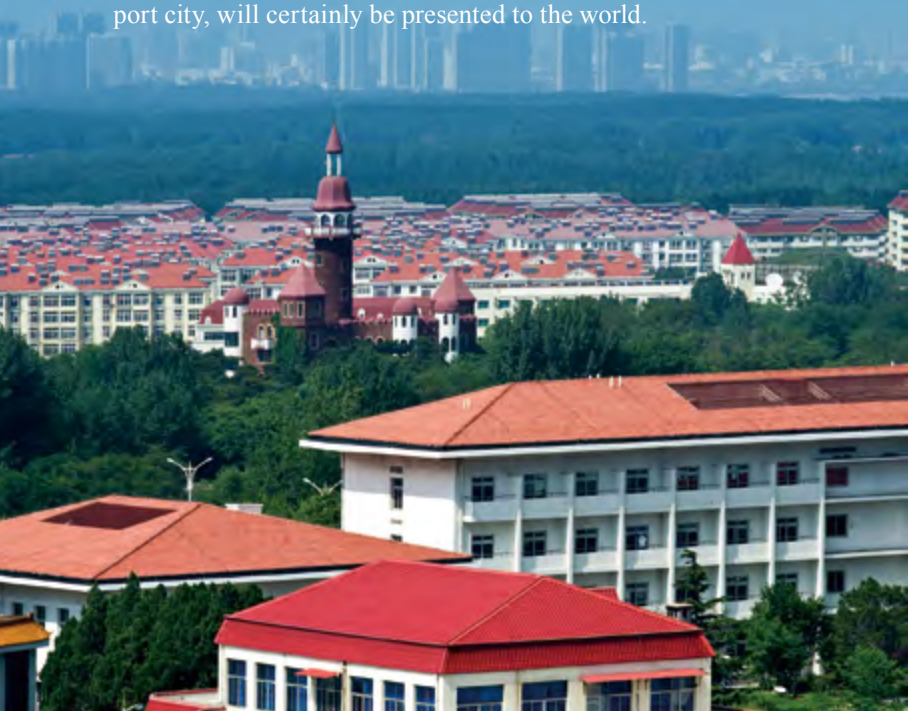
It is the place where the Great Wall and the sea meet.

It is a paradise for all-season tourism known as “Mountains and sea of Qinhuangdao, a healthcare resort”.

It is the beautiful city of Qinhuangdao.

Looking into the future, Qinhuangdao is more confident.

In the near future, this strong coastal city, beautiful international port city, will certainly be presented to the world.



# Qinhuangdao China

## 2019

The Publicity Department of CPC Qinhuangdao Municipal Committee  
The Information Office of Qinhuangdao Municipal People's Government





# City Images

National Civilized City

National Forest City

National Demonstration City of Strong City Quality

The 1st Batch of Coastal Open Cities in China

The 1st Batch of Top Tourist Cities of China

China's Top 100 Cities with Comprehensive Strength

The Co-host City of Beijing Olympic Games

National Double Support Model City

National Model City in Public Security

Comprehensive Administration

National Model of Green City

National Garden City

China's Happiest City

The Capital of Bird-watching

The Demonstration City of National Marine

Economy Innovation and Development

The 1st Batch Pilot Cities of National

Comprehensive Reform of Service Industry

National Tourism Comprehensive Reform Pilot City

National Innovative Pilot City

National Intelligent Pilot City

National Low-carbon Pilot City

National Pension Service Comprehensive Reform Pilot City

National Demonstration Zone of Public Culture Service System

Beidaihe Life and Health Industry

Innovation Demonstration Zone







# Contents

<b>01</b>	Overview
<b>07</b>	City of Charm
<b>13</b>	City of Innovation
<b>27</b>	City of Tourism
<b>35</b>	City of Vitality
<b>43</b>	City of Happiness
<b>49</b>	Prospects







## Overview

- Origin of Qinhuangdao
- Geographic Location
- Administration Divisions and Population
- Transportation
- Climate
- Products and Resources



## Origin of Qinhuangdao

In 215 BC, Qin Shi Huang, the First Emperor in Chinese History, came here on his tour of the east, and sent people to the sea in search of medicine for immortality. Here he also engraved his “Poetry of Jieshimen”. That is how Qinhuangdao got its name.

## Geographic Location

Located in the northeast of Hebei Province, with Liaoning to the east, Beijing and Tianjin to the west, Mt. Yanshan to the north and the Bohai Sea to the south, Qinhuangdao is a meeting place for the two economic areas of Northeast China and North China. It's also the center of the Circum-Bohai-Sea Economic Circle. 280 km away from Beijing, and 220 km from Tianjin, it is a national historical and cultural city, and the sole “zero-distance” coastal city in Hebei Province, known as the “Great Wall Coastal Park” and “Back Garden of Beijing and Tianjin”. It is a bright pearl on the crown of the Beijing-Tianjin-Hebei Economic Circle.



## Administration Divisions and Population

Qinhuangdao consists of four urban districts—Haigang, Beidaihe, Shanhaiguan, and Funing, as well as the three counties of Changli, Lulong, and Qinglong Manchu Autonomous County. In addition, the Qinhuangdao Economic & Technological Development Zone and Beidaihe New District are under its jurisdiction. The land area is 7,802 square kilometers; the sea area is 1,805 square kilometers; the coastline is 162.7 kilometers long; and the population is 3,314,200. There are 45 ethnic groups including Han, Manchu, Hui, Korean, Mongolian, and Zhuang, among others. The minority population mainly live in Qinglong Manchu Autonomous County. Xihenan Village in Funing District is the only Korean ethnic community in Hebei Province.



## Transportation

As an important node city for the coordinated development of Beijing, Tianjin, and Hebei in general, Qinhuangdao has a convenient and smooth transportation network. Six railways (Jinqin, Jingshan, Jingqin, Daqin, Qinshen, and Shenshan), and three expressways (Jingha, Yanhai and Chengqin) intersect here. The Beijing-Tangshan-Qinhuangdao intercity rail, which is under construction, will bring Qinhuangdao into the “1-hour” Economic Circle of Beijing-Tianjin-Qinhuangdao. As the main hub port of China's North-to-South Coal Transportation, the shipping business of Qinhuangdao Port reaches more than 130 countries and regions, and has opened international routes to Incheon, South Korea, Kanto, Japan, Davao, Philippines, and the International Ship-rail Container Route of Korea-China-Mongolia. The forthcoming international tourist port will achieve the transformation and development of a century-old commercial port into multiple uses. Beidaihe International Airport also has a number of domestic routes, such as Shanghai, Shenzhen, Harbin, and Nanjing.

## Climate

The climate of Qinhuangdao is temperate and semi-humid continental monsoon. Due to the influence of the ocean, the spring is less rainy and dry, the summer is warm without intense heat, the autumn is cool and sunny, and the winter is long without severe cold. The average annual temperature is  $11.1^{\circ}\text{C}$ , with an average maximum of  $15.9^{\circ}\text{C}$ , an average minimum of  $7.0^{\circ}\text{C}$ , and an average annual precipitation of 602.1 mm.



## Products and Resources

The mountains and sea are productive in Qinhuangdao. Lulong County is called the “Hometown of Sweet Potatoes in China”, the “Wine Grape Base County in China”, and the “Hometown of Walnuts in China”. Changli County is known as the “Hometown of Grapes in China”; Qinglong Manchu Autonomous County as the “Hometown of Apples in China”, Shanhaiguan District as the “Hometown of Cherries in China”, and Chapeng Town of Funing District as the “Hometown of Tomatoes in China”.

Local specialties that are well-known here and abroad include Jingdong chestnut, Shimen walnuts, muscat grapes, peaches, wild kiwi, and bitter almonds. The local wild vegetables and precious Chinese medical herbs, such as daylily, agaric, aquilinum, scutellaria, platycodon, milkwort, and atracylodes, are also renowned. Seafood is abundant, including shrimp, squid,





meretrix, clams, portunus trituberculatus, red clip, red sea crab, mantis shrimp, metapenaeus ensis, and Penaeus japonicus. Among them, “Bohai Prawn” is one of the “Eight treasures of seafood” and enjoys a high reputation in the international market. Fifty-six kinds of useful mineral resources have been found in Qinhuangdao. The average annual water resource is 1.571 billion cubic meters, making it one of the cities with the most abundant water resources in northern China.







## City of Charm

- Spirit of the Jieshi
- Soul of the Great Wall
- Charm of the Summer Resort
- Grand Port of the Century



Qinhuangdao has a long history and deep cultural connotations. In more than two thousand years, it witnessed abundant historical anecdotes such as Bo Yi and Shu Qi Declining the Crown, Qin Shi Huang Seeking Immortality, Meng Jiangnv Seeking Her Husband, Emperor Wu of Han Dynasty Tour, Emperor Wu of Wei Dynasty Swung Whip, and Emperor Taizong of Tang Dynasty Lodging, and there are numerous cultural relics such as the Ruins of Qin Dynasty Imperial Palace, the Site of Qin Shi Huang Seeking Immortality into the Sea, the First Pass under Heaven, the Old Dragon's Head, Jiangnv Temple, Han Wen Gong Temple, and modern celebrity villa groups.



### Spirit of the Jieshi

Qinhuangdao was known as “Jieshi” in ancient times, which is where the ancient Guzhu State was located 3,600 years ago. It is also the hometown of Bo Yi and Shu Qi, who were honored as the “Sages in ancient times” by Confucius. When viewing the sea, Cao Cao, the Emperor Wu of Wei kingdom, wrote the immortal poem: “made a trip east to Jieshi to see the boundless blue sea”. Li Shimin, the wise Emperor of Tang Dynasty, also improvised poems which show the rich historical connotations and infinite charm of Qinhuangdao.





## Soul of the Great Wall

“The unmatched place locks the two capitals, the First Pass under Heaven of the Great Wall.” In the Ming Dynasty, the general Xu Da set up a grand pass between the mountains and sea, which echoed the beginning of the Great Wall with Jiayuguan Pass on the far end of it. The Jiaoshan Great Wall, Meng Jiangnv Temple, and the Old Dragon’s Head are some of the majestic passes in this city with a close relationship with the Great Wall, giving rise to many famous historical stories and folklores such as “Meng Jiangnv weeping over the Great Wall”. Qinhuangdao has witnessed the mottled history and the changes of the world, and is a “natural Great Wall Museum.”



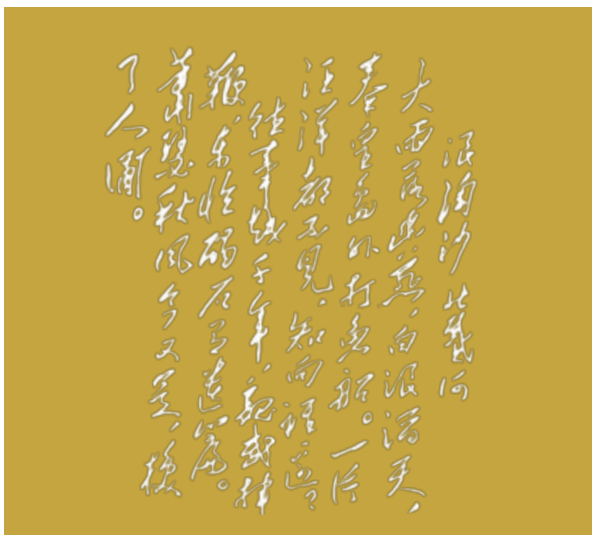
## Charm of the Summer Resort

Beidaihe is a famous tourist attraction at home and abroad and the cradle of Chinese tourism industry in modern times! In 1898, the Qing government turned Beidaihe into a summer resort, “allowing Chinese and foreign people to live together”. With the





opening of the Haibin branch of Beining Railway, in order to “strive for sovereignty and reject foreigners”, Zhu Qiqian established the Beidaihe Seaside Public Welfare Association. Together with the upper class of Beidaihe, the association discharged duties on behalf of the local administrative authority, pioneering in tourism, and making Beidaihe the “best summer resort in East Asia”. Since 1953, Beidaihe has become the “Summer Resort” of China, and was the earliest and largest base of leisure and health care in China. Many great men in modern times, including Sun Yat-sen, Li Dazhao, Mao Zedong, and Deng Xiaoping, came and stayed here. The poem “Langtaosha Beidaihe” (Waves washing the sand in Beidaihe) written by Chairman Mao Zedong brought Qinhuangdao further renown.



## Grand Port of the Century

Originated from the Jieshi Port in the Spring and Autumn Period, the Qinhuangdao Port has had a history of more than 2,700 years. Opened in 1898, it is a natural non-freezing port located in the key junction of Northeast China and North China, and is the first self-opened port in the north of China. After more than a hundred years, Qinhuangdao Port has developed into the largest public



coal terminal and dry-bulk shipping port in the world. As an international trade port with comprehensive multifunctionality dominated by energy output, Qinhuangdao Port connects seamlessly

with Daqin Railway as the main hub port of China's energy transportation, playing the role of national "coal price stabilizer" and "North-to-South coal transportation reservoir". At present, in accordance with the orientation of "first-class national tourist city" and the concept of "settling the port by the city", Qinhuangdao will coordinate urban and port resources, promote the in-depth integration and innovation of port, industry and city, focus on the development of container shipping and become a home for cruise lines, and strive to build internationally renowned tourist port and modern integrated trading port.



细胞制备中心  
CELL PREPARATION CENTER







# City of Innovation

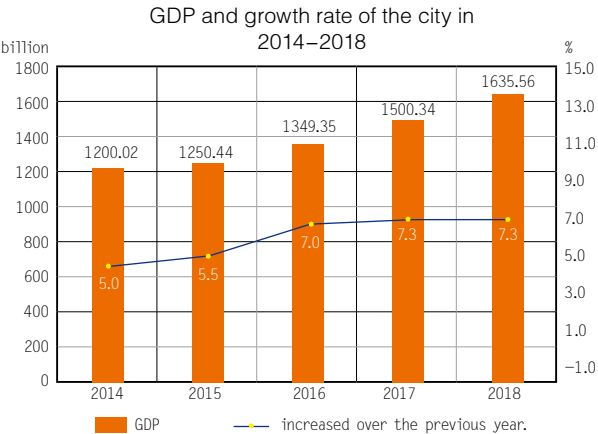
- Comprehensive Strength
- Economic Structure
- City of Industry
- Innovation Drive
- Characteristic Agriculture
- Dry Red Wine Industry
- Tourism Industry
- Health Care Industry
- Promising Land for Opening up

Qinhuangdao is a city full of vigor and vitality, and the best place for the development of talents and investment. It is ranked as a National Demonstration City of Strong City Quality, a First Batch Pilot City of Comprehensive Reform of Service Industry, Comprehensive Reform of Tourism, Innovative City, Smart City, Information Consumption, Low-carbon City, Comprehensive Reform of Pension Service, and a First Batch National Pilot City of City-enterprise Linkage Inclusive Pension.



Comprehensive Strength

In 2018, the regional GDP was 163.556 billion yuan, an increase of 7.3% over the previous year. Among them, the added value of primary industries was 20.326 billion yuan, up 3.8%; the added value of secondary industries was 54.205 billion yuan, up



7.0%; the added value of the tertiary industries was 89.026 billion yuan, up 8.3%. The per capita GDP of the city was 52,380 yuan, an increase of 6.6%. The added value of the private economy reached 109.87 billion yuan, an increase of 7.8% over the previous year, accounting for 67.2% of the city's total GDP. The annual fiscal revenue was 25.943 billion yuan, an increase of 12.6% over the previous year, of which the general public budget revenue was 13.343 billion yuan, an increase of 12.6%. The per capita disposable income of urban and rural residents increased by 7.9% and 9.2% respectively.

## Economic Structure

In 2018, the proportion of the three industries was 12.4%, 33.2%, and 54.4%. The contribution rate of the service industry to economic growth was 60.2%, which drove the economic growth by 4.4 percentage points; the added value of the equipment manufacturing industry increased by 14.2%, contributing 53.9% to the growth of the added value of industrial enterprises above designated size; the added value of high-tech industries increased by 14.6%. The agricultural industrialization operation rate has maintained a leading position in Hebei Province for ten consecutive years.



## City of Industry

The first mechanically-manufactured glass factory, the first railway bridge, the first F-class heavy gas turbine, and the first bottle of dry red wine in China were all born here. Qinhuangdao is a world-class automobile wheel manufacturing base, the largest aluminum product manufacturing and processing base in China, the largest grain and oil processing base in the north, a national high-quality dry red wine production base, a national heavy equipment estuary base, a million-ton shipbuilding base, and a data industry base. Equipment manufacturing, metal rolling, grain, oil, and food industries have been developed. Electronic information, port logistics, leisure tourism, life and health, and other industries are emerging. Aiming to become a first-class international tourist city, Qinhuangdao is focusing on constructing a modern industrial system characterized by large-scale tourism, healthcare and wellness, and logistics industries, big data processing, intelligence,

mobile internet and cloud computing, high-end manufacturing, and modern characteristic agriculture.



### Innovation Drive

As the national innovative pilot city, there are 13 colleges and universities in Qinhuangdao, including Yanshan University and a number of research institutes of Chinese Academy of Sciences from Tsinghua University and Tianjin University, as well as many business incubator bases such as Beijing-Tianjin Talent Innovation Entrepreneurship Park and College Student Entrepreneurship Park. The talent density is the highest within Hebei Province. Due to the in-depth implementation of innovation-driven development strategies, and the promotion of the technology multiplication plan, the number of the high-tech enterprises and technology-based SMEs reached 197 and 2429, respectively. Seventeen companies including





Xingjian Glass were selected as provincial “specialized, excellent, special, and new” SMEs, the number of public business centers at the municipal level and above reached 35, and the instrument achievement transformation platform of Tsinghua University Intelligent Equipment Research Institute was put into use. At the end of the year, there were 6 provincial-level industrial technology research institutes, 211 engineering technology research centers (key laboratories) above the municipal level, and 19 academician workstations. Due to the implementation of the “three excellent” cultivation project of intellectual property rights, the number of invention patents per 10,000 people reached 7.9, ranking first in the province. Sino-Swiss Design Port opened as scheduled and 24 companies settled in the port. The project of top talents, science and technology leading talents, and the port city talents programs were implemented, with 100 experts invited as talent ambassadors. Focusing on the activities of “Innovation and Entrepreneurship, Serve the People’s Livelihood, and Serve Development”, Qinhuangdao will be built into an innovative and entrepreneurial “New Heights” and “Dream Factory”, a city of science, technology, and innovation in north China.



### Characteristic Agriculture

The existing agricultural acreage is 2.86 million mu, the planting area of crops is 3.3 million mu, and the agricultural working population is 1.55 million. In 2018, the total output value of agriculture, forestry, animal husbandry and fisheries was 36.988 billion yuan; the added value was 21.971 billion yuan, accounting for 12.5% of the city's GDP. The characteristic industry cluster of grain and oil, forest fruits, vegetables, Chinese herbal medicines, pigs, broilers, fur animals, fleshy sheep, and aquatic products were formed. Eight province-level modern agricultural parks and recreational agriculture demonstration zones were added, and

Qinhuangdao has become the only experimental demonstration city for sustainable agricultural development in Hebei Province. As a large grain and oil processing market in north China, there are 34 large-scale grain and oil processing enterprises such as Lihua Starch, Pengtai Flour, and Jinhai Grain and Oil, with a combined annual processing capacity of over 5 million tons. Changli and Funing were ranked as key regional counties of the Circum-Bohai Sea vegetable facility, and “Mafangying Cucumber” was listed among the Top 10 local characteristic vegetables in Hebei Province. Qinhuangdao City has become the largest bay scallop breeding base and a national superior agricultural products (scallop) industrial belt in China. The Changli sea cucumber has been identified as the First Batch Characteristic Agricultural Products Producing Area in Hebei Province, becoming the national aquatic product processing demonstration base and the largest aquatic product export processing base in Hebei Province. Qinglong is an important county for the production of Chinese herbal medicines in Hebei Province.



## Dry Red Wine Industry

The wine-producing region of Qinhuangdao is located in the wine grape growing belt at northern latitude. The climate and soil conditions are richly endowed by nature. With more than 400 years of grape planting history, it produced the first bottle of dry red wine in New China, and witnessed the historical changes of China's independent brewing of dry red wine. After more than 30 years of development, the wine-producing region of Qinhuangdao has established a relatively complete system of wine grape growing and wine production system. At present, the wine grape planting area is 60,000 mu, and there are 48 wine enterprises, forming the high-end wine brewing enterprise cluster of Huaxia Great Wall, Maotai, Shangri-La, Langgs, Diwang, Jinshi, Haiya Bay, Liuhe Mountain Villa, and Renxuan, with an annual processing capacity of 210,000 tons. In addition, there are more than 10 supporting companies such



as bottle making, color printing and packaging, brewing equipment manufacturing, and oak barrel producing, and therefore it was rewarded the honor of “Wine City in China”.

### Tourism Industry

Tourism is the basic industry of Qinhuangdao. Focusing on the construction of a first-class international tourist city, and an all-for-one tourism demonstration zone, Qinhuangdao has spared no effort to boost tourism in “mountains, sea, and villages”. The 2nd Hebei Conference on Tourism for Development was successfully held in Qinhuangdao, enhancing the brand effect of “Mountains and Sea of Qinhuangdao· Health Care Resort”, and attracting 30 billion yuan of social capital with 3 billion yuan of government infrastructure investment. The marine bus of Xin’ao Group was officially put into operation, and the 100-year-old port was transformed and revitalized. The start-up area projects such as the Oath Garden and the cruise ship terminal were put into use, and the 1,200-mu Xigang Garden was officially opened. The 100-year local railway has successfully transformed into the sole Shanhai Tourist Railway in China. The 100-kilometer Great Wall Tourist Highway has been



completed and opened to traffic, which opened the thoroughfare for the mountains and sea tourism. The characteristic theme towns such as Tiannv Town, Grape Town, and Bancheng Town represent new highlights of the all-for-one tourism. The 1st Qihuangdao Conference on Tourism for Development was held successfully, and 13 tourism projects with a total investment of 29.2 billion yuan were signed. Projects such as the Jialong Shanhaiguan Cultural Tourism Resort and the Yuerong Resort Hotel Complex have been accelerated, and a number of new business projects such as Heart Paradise and Huaxia Yiyang Nursing Manor have been completed. In 2018, it received 62.512 million domestic and foreign tourists, achieving a total tourism income of 82.487 billion yuan, an increase of 19% and 25.3% respectively.



## Health Care Industry

Health is the foundation of happiness. With the support of the National Development and Reform Commission and other ministries and commissions, Beidaihe National Life and Health Industry Innovation Demonstration Zone was approved and made significant progress, and efforts were made to build a five-in-one industrial cluster of “Hospital, Medicine, Health Care, Fitness and Tourism”. 40 projects with a total investment of 34.6 billion yuan have been accelerated, and more than 10 high-end projects such as the Germany Pannaeus Medical Center have settled in the Beidaihe Life Science Park. The Syncytial Reproductive Center and Cell Preparation Center have been ready for operation. The state regional medical centers are under construction, Beidaihe International Cancer Hospital and Beidaihe Cardiovascular Hospital have been started, and the domestic high-level medical resources such as the Peking University Third Hospital have been accelerated. National projects including the Qinhuangdao Research Institute of National Rehabilitation Aids Research Center have been introduced. Whistamp has become the largest manufacturer of functional



medical innovative equipment in China. Kangtai Medicine has become one of the largest medical device R&D and production bases in China. Taisheng GRS International Rehabilitation Center has been put into operation. The 2018 China Rehabilitation Aids Industry Innovation Conference, China Health Care Industry Development Forum, and Life Science Summit were held. Two rehabilitation aid industrial parks in Qinhuangdao Development Zone and Beidaihe New District have been under construction, and the health care center in North China has already taken shape.

### Promising Land for Opening up

Open carriers have been established, such as state-level development zones, export processing zones, and university science parks. Merchants from 57 countries and regions have been attracted to invest in Qinhuangdao including Alcoa, German Wilo,







and Japanese Asahi Glass. Qinhuangdao has established economic and trade relations with more than 170 countries and regions, and more than 20 Fortune 500 companies and well-known multinational companies have invested in Qinhuangdao. It has established friendly exchanges and cooperation with more than 20 cities in the United States, Italy, Japan, South Korea, and South Africa. Vigorously implementing the strategy of strengthening the city by opening up, it has successfully held a series of activities such as the China Rehabilitation Aids Industry Innovation Conference, Beidaihe Life and Health Industry Development Forum & the 2nd Life Science Summit, Hebei Returned Overseas Chinese Doctors Grassroots Innovation and Entrepreneurship & Qinhuangdao International Talents Entrepreneurship Week. The actual utilization of foreign capital in 2018 was 1.109 billion US dollars, an increase of 8.5%, including foreign direct investment of 1.086 billion US dollars, an increase of 7.1%, contractual foreign investment of 597 million US dollars, an increase of 2.40 times. The total export



value of the year was 23.716 billion yuan, an increase of 10%. It has been successfully integrated into the coordinated development of Beijing-Tianjin-Hebei, implemented 153 cooperation projects with Beijing-Tianjin, further deepened cooperation with Beijing Enterprises Group and Beijing Capital Group, half completed the project of Beijing Energy Thermoelectricity Cogeneration, and finished the overall relocation project of Beijing Jingwei Co., Ltd. It has actively integrated into the “Belt and Road” construction, and the Korea-China-Mongolia International Ship-rail Connecting Container Line was put into operation.



### *Qinhuangdao Economic and Technological Development Zone*

Qinhuangdao Economic and Technological Development Zone is in the first batch of national economic and technological development zones in Hebei Province approved by the State Council in 1984. It is located in the center of the emerging Bohai Bay Economic Belt with a total planned area of 128 square kilometers, and the resident population of about 300,000. It is divided into two areas, east and west. The former is located east of Laolongtou (The Old Dragon's Head) of Shanhaiguan, where the ten-thousand-li Great Wall starts, the west is adjacent to Beidaihe, the famous summer resort. It has a coastline of 6 kilometers and a sea area of 23.81 square kilometers.





It has built a modern, multi-functional, comprehensive and green eco-industrial park, integrating national-level export processing zones, national-level university science and technology parks, and national-level high-tech entrepreneurial service centers. It has become a window for reform and opening up in Hebei Province, and one of the most dynamic economic entities in the Circum-Bohai Sea Economic Circle. It has successively won the honorary titles such as “Creativity Development Zone in China, Best Investment Environment Development Zone, Most Development Potential Park, Economic Development Advanced Development Zone in Hebei, and the First Batch of National People's Livelihood Improvement Model Development Zone”, and has ranked Top 30 of National-level Development Zone of Comprehensive Strength.

### *Beidaihe New District*

Beidaihe New District is adjacent to Daihe River in the north, Luanhe River in the south, Jingha Railway and Yanhai Expressway in the west, and the Bohai Sea in the east, with a total area of 425.8



square kilometers, a coastline of 82 kilometers, and a population of 169,000. On September 28, 2016, the Beidaihe Life and Health Industry Innovation Demonstration Zone was approved by the State Council, consisting of Beidaihe New District, Beidaihe District, and Beidaihe Airport Area, with a planned area of 520 square kilometers, and the core area located in Beidaihe New District with an area of 40 square kilometers. Adhering to the principle of “world vision, international standards, Chinese characteristics, high-point positioning”, it has vigorously developed its health service industry, its health manufacturing industry, and healthy agriculture. It has built a large-scale health industry cluster of “Hospital, Medicine, Health Care, Fitness and Tourism”, and has accelerated the formation of five major spatial layouts of “science, education, leisure, recreation and tourism in the north, life health in the center, ecological economy in the south” and the “airport bonded zone in the west”, sparing no effort to create a “four-city strategy” demonstration zone, and become a growth magnet for economic development and an international recreational tourism destination.









## Tourist City

- Great Wall Culture Tourism
- Coastal Vacation Tourism
- Ecological Leisure Tourism
- Bird Watching Tourism
- Celebrity Villas Tourism
- Red Wine Tourism
- Hot Spring Tourism
- Winter Tourism
- Yanzhao Gardens Tourism
- Gourmet Experience Tourism

Qinhuangdao is the birthplace of China's modern tourism industry, China's first tourist poster, and the first tourist and sightseeing railway branch. Within a radius of 50 kilometers, it is rich in tourism resources such as the sea, the Great Wall, beaches, lakes, green mountains, hot springs, and wetlands. After many years of construction, Qinhuangdao has become a famous coastal leisure resort with 34 scenic spots above A-level. In 2018, more than 62 million tourists and ranked among the Best Leisure Cities in China, Top 10 Marine Tourism Destination, the 1st Batch of National High-quality Health-care and Leisure Resorts, and won 2018 Best Tourism Industry in China.



### Great Wall Culture Tourism

Great Wall Tourism is the iconic symbol of Qinhuangdao. The ten-thousand-li Great Wall starts east from Qinhuangdao with 223.1 kilometers in its territory. Integrated with the mountains,



sea, passes, and city, it is the most essential part of the Great Wall. There is the sole great wall in the sea - the Old Dragon's Head, and the well-preserved Ming Great Wall brick kiln ruins. The Great Wall in Qinhuangdao is hailed as the "Natural Great Wall Museum" because of its majesty, beautiful scenery, elegant buildings, ample cultural relics, and legends and folklore.

## Coastal Vacation Tourism

The 162.7-kilometer coastline is the finest bathing beach in northern China. Along the coastline, there are famous landscapes such as the Site of Qin Shi Huang Seeking Immortality at the Sea, Xin'ao Underwater World, Pigeon Nest Park, Tiger Rock Bathing Beach, the Sand Sculpture World of Jinsha Bay, and Emerald Island.

## Ecological Leisure Tour

Known as the “natural oxygen bar”, the four main urban areas are connected by green forest belts and have a unique beaded group layout. There are Liujiang National Geological Park, Coastal National Forest Park, Changshou Mountain National Forest Park, and Changli Gold Coast National Marine Nature Reserve, forming an eco-tourism industry cluster based on high-tech agriculture, wine culture, farming experience, and landscape tourism.



## Bird Watching Tourism

As one of the four significant bird watching resorts in the world, Qinhuangdao is known as the “Mecca of Bird Watching” and was awarded the title “Bird Watching Capital of China”. At present, more than 500 species of birds have been found, accounting for 30.34% of the wild birds across China, of which 70 are national key protected birds. The best times for bird watching are from March to late May, and mid-November. Beidaihe Wetlands, Qilihai, Yanghekou, and Shihe Estuary are the foremost gathering places of various bird species, attracting a large number of bird lovers from home and abroad.



## Celebrity Villas Tourism

The villas are typical old-fashioned buildings in Beidaihe. In 1898, the Qing government used this place as a summer resort for foreigners, therefore, celebrities and politicians from China and abroad came to build more than 700 villas in various architectural styles, 110 of which still remain. Thus, Beidaihe is hailed as the “World Architecture Museum” and has one of the four largest villa groups in China. Twenty modern villa groups are listed as national key cultural protection units.



## Red Wine Tourism

With a history of more than 400 years of grape planting, Changli is known as the “Hometown of Chinese Wine Grapes” and “China’s Dry Red Wine City”. The first bottle of wine in China was produced here. It is home to the biggest underground wine cellar of Asia, a fascinating wine estate with advanced wine-making techniques, and a vast vineyard of 10,000 mu. Renxuan Winery, Langes Winery, Grape Town, and Huaxia Wine Estate are popular with tourists. You can experience everlasting romance and a soothing atmosphere here.





### Hot Spring Tourism

Hot spring tourism is characterized by health and wellness, integrating tourism, leisure and business. Qinhuangdao has become a hot spot of tourism and vacationing in the 21st century, and it is also known as the “sunrise” in the sunrise industry. With the concept of “enjoying the sea in the hot spring”, Qinhuangdao City has vigorously developed hot spring tourism projects, combined hot springs with sea visits, and presented the marine hot spring projects—Fisher Island Hot Spring and Arcadia Ronghe Xinyuan Hot Spring that are favored by tourists.

### Winter Tourism

Qinhuangdao is a tourist city good for all seasons. After years of cultivation by the Hebei Conference on Tourism for Development, a number of winter tourist attractions have also emerged. Ziyunshan Ski Resort, Laojunding, Tiannv Town, Jifa Agricultural Dream Kingdom, PVF Ice Hockey Stadium, and other places, provide visitors with a variety of winter sports and recreation activities, which will promote the rapid development of all-for-one tourism.







### Yanzhao Gardens Tourism

The 2nd Hebei Garden Expo was successfully held in Qinhuangdao in 2018. The Garden Expo Park is located at Qiyun Hill in Qinhuangdao Economic and Technological Development Zone, north of Beidaihe Seashore, south of Zushan Scenic Spot, west of Haigang District downtown, and east of “Licheng” Funing District, with a total area of 2,000 mu and a total investment of 1.8 billion yuan. Based on the natural mountain topography of Qiyun Hill, the Garden Expo Park is planned out to form a spatial structure of “three valleys and one vein, three cores and two groups”. Highlights of the three valleys are a water vein running from north to south, three landmark buildings (the Main Venue, Green Pavilion, and Qiyunge Pavilion) which form a central core, and 40 exhibition gardens that are divided into two major areas: the south and the north. Combined with the artistic essence of Chinese and foreign gardens and the regional characteristics of Hebei gardens, it has become popular on business cards, giving new economic highlights and new leisure spaces to Qinhuangdao City.

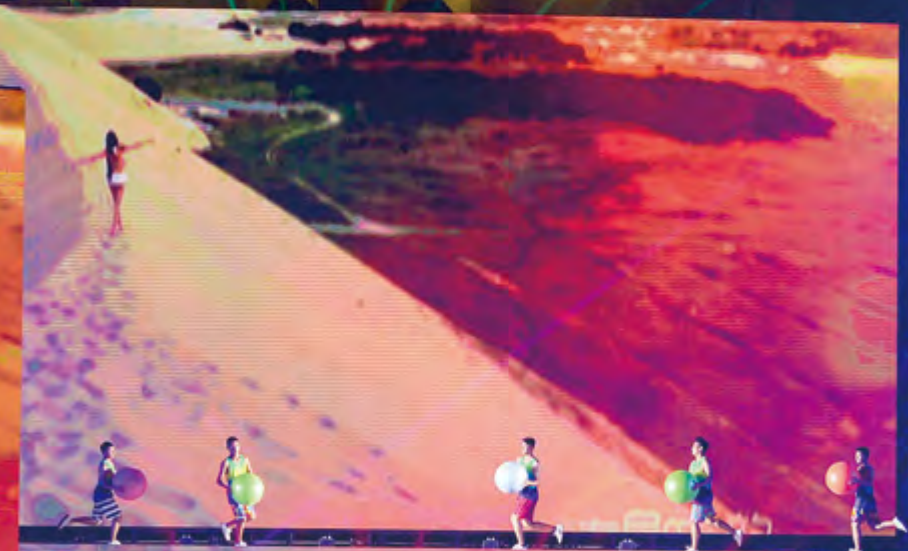




### Gourmet Experience Tourism

The rich variety of products provides a source of ingredients for Qinhuangdao, and made it a city for food lovers. Seafood is symbolic of Qinhuangdao cuisine, such as steamed crab, fried prawn, spicy fried clam, and fried mantis shrimp with bean sauce—you can indulge yourself with delicious seafood here. In addition to seafood, characteristically flavored snacks have always been favored, including “Hot Pot,” “Yangchangzi Sausage,” “Boluo Pie,” “Zhaojiaguan Jiaozi,” “Sitiao Steamed Buns,” “Huiji Green Pea Cake,” “Rose Petal Cake,” “Qinglong Laodoufu,” and “Eight Banners Sticky Buns”. These local specialties are amazing gifts from Qinhuangdao. regional characteristics of Hebei gardens, it has become popular on business cards, giving new economic highlights and new leisure spaces to Qinhuangdao City.







## City of Vitality

- Cultural Benefits
- Cultural Heritages
- Splendid Culture
- City of Museums
- City of Sports
- Wonderful Festivals





Qinhuangdao is a cultural city featuring both ancient charm and a modern atmosphere. It is the first batch demonstration zone of the public cultural service system in China. The city has a characteristic blend of distinct cultural features including the Guzhu culture, the mountains and sea, the Great Wall, tourism, folk customs, and health care. The multiculturalism of China and the West blends here. Urban culture flourishes everywhere. This vibrant mix of cultures nourishes the hearts of everyone here.



### Cultural Benefits

Culture is the soul of development. Cultural benefit projects have been implemented to construct a cultural infrastructure network system, taking the municipal “three halls” as the leader, the county’s “two halls and one institute” as the link, the rural cultural facilities as the foundation, and the hardware and software as the double track. There are 224 cultural supermarkets, library branches, mobile book stations, public culture bases and other grass-roots cultural facilities. It has built 908 literary towns, streets, villages, communities, and demonstration families. The Jinshawan Bay Sand





Sculpture World and the Sino-Russian Culture and Art Industrial Park have been selected as province-level cultural industry projects, and 6 province-level cultural industrial bases, 3 province-level cultural industry demonstration zones, and 4 province-level cultural industry clusters have been established. Cultural industry clusters with distinctive features such as the Great Wall, the sea, and red wine have been cultivated. There are 70 cultural enterprises in the city, and the added value of culture and related industries is 4.863 billion yuan.



## Cultural Heritages

There are 619 non-removable cultural relics registered in Qinhuangdao, 11 national key cultural protection units, 24 provincial key cultural relics protection units, and 5,234 cultural relics collections. There are 5 national intangible cultural heritages, 37 provincial heritages, 112 municipal heritages, 6 representative inheritors of national intangible cultural heritage projects, 50 provincial inheritors, and 125 municipal inheritors. The intangible projects are comprehensive, rich in variety, characterized by distinctive features and wide geographical distribution, covering eight categories of folk literature, traditional music, dance, drama, sports, art, skills, and folk customs.

## Splendid Culture

Inherited traditional culture has been improved in Qinhuangdao, and modern art has also shown its charm in this historical and cultural city. Qinhuangdao is known as the hometown of “Great Wall Culture,” “Guzhu Culture,” “Blowing Songs,” and “Folk Poetry.” Traditional cultural inheritance activities such as engraving, opera, and poetry have been extensively deepened. In



2017, Qinhuangdao became the sole city in Hebei Province to be awarded the “City of Chinese Poetry”, which is another “Cultural Gold Business Card” added to the city. The folk culture of Changli Yangko, Funing Wind and Drum Music keeps “going out”, highlighting the regional charm. Festivals such as the Sea God Sacrifice Festival and the Ocean Culture Festival are wonderful. Large-scale real-life plays such as “Langtaosha·Beidaihe” are popular among tourists. Cultural exchange activities with countries such as Russia and South Korea have become increasingly popular.

### City of Museums

Qinhuangdao is a historical and cultural city. Its long and solemn history has left countless cultural heritages for this city. There are 17 special museums, such as the Qin Dynasty Imperial Palace Ruins Museum, the Great Wall Museum, the Liujiang Geological Museum, the Glass Museum, the Port Museum, the Beidaihe Museum, and the Qinglong Museum of Ethnography. Each of them is a bright pearl on the crown of the city, which shines with cultural charm, not only carrying the historical civilization of the city, but also building a platform for exchanges with the world.





## City of Sports

Sports are a symbol of civilization. As the only prefecture-level city in China that has hosted Asian Games and Olympic Games, and as a national sports industry contact point, Qinhuangdao has a number of “national” sports facilities such as the Qinhuangdao Training Base of the State Sports General Administration, the National Swimming and Diving Training Base, the Olympic Sports Center, and the Chinese Football School. It has cultivated more than 10 international events, including the Qinhuangdao International Marathon, the Chinese Eight-ball International Masters, the Beidaihe International Roller Skating Festival, the World Walking





Conference, the International Sailing Race, and the International Equestrian Grand Prix. With the opportunity hosting some of the Beijing Winter Olympic games, we are making every effort to create the activity brand of “Qinhuangdao Winter-Happy Ice and Snow Festival.” The PVF Ice Hockey Stadium has been put into operation, and the Laojunding Ice and Snow Park, Ziyunshan Ski Resort, and Jifa Ski Resort have begun to take shape. We will comprehensively implement the plan of “1.5 million people into ice and snow sports”, and organize 100,000 primary and middle school students to experience the sports of ice and snow, sailing, windsurfing, and roller skating through three “10,000 people plans,” to create a conducive atmosphere for national fitness.





## Wonderful Festivals

Festivals are the focal points of cultural tourism and the wellspring for the tourism economy—festivals with regional characteristics in all seasons show the infinite charm of Qinhuangdao's tourism culture. The Longtaitou Festival, Sea God Sacrifice Festival, International Roller Skating Festival, Sand Sculpture Festival, Tiannv Magnolia Festival, International Great Wall Festival, Wine Festival, the Happy Ice and Snow Festival, and the Shanhaiguan Annual Fair, are each distinctive and favored by the general public and tourists. They have rooted like beautiful flowers in the soil of the city.









## City of Happiness

- Ecological and Livable City
- Civilized City
- Education
- Health Care
- People's Livelihood

Qinhuangdao is a city of harmony and happiness, the people are friendly and true, they enjoy their happy life, accumulate strength, and let go of dreams.



### Ecological and Livable City

Good ecology and a beautiful environment are the most splendid hallmarks of Qinhuangdao. Neither too hot in summer nor too cold in winter, the climate is mild, and the forest coverage rate is more than 54%. The water quality compliance rate for drinking water and coastal waters are 100%, the key beach water quality meets the first-class standard, and the air is rich in negative oxygen ions. It has been awarded the title of National Forest City. Being adjacent to the sea, blending with the forest, dancing with a sea of flowers, and being replete with fresh air, make the city the most environmentally suitable habitation in northern China. It is becoming an ecological model city for the Beijing-Tianjin-Hebei urban agglomeration. Qinhuangdao is not only a livable city, but also a place to enjoy the good life. It has been hailed as a city of “health and longevity, beauty and happiness.”





### Civilized City

Civilization is a comprehensive manifestation of social progress and wealth creation. After 15 years of unremitting efforts, Qinhuangdao has successfully won the crown of National Civilized City, and the urban environmental quality and the spirit of the citizens have been improved. A sense of success, belonging and happiness have emerged among the citizens. Nowadays, the strategy of casting the city by civilization is being implemented in depth, the people-serving deeds such as old community transformation and the creation of civilized communities are vigorously carried out, and voluntary service campaigns such as “Follow Shen Rubo to do good for the people,” “Civil Washing City,” and the “Cigar Butts Revolution” are launched, so as to consolidate and upgrade the achievement of national civilized city, and build higher urban civilization.

### Education

Qinhuangdao is striving to be a learning city with a modern education system with a high level of fairness, strong sustainable development, full of vigor and vitality, so as to provide strong



intellectual support for people's livelihood and urban development.

There are 442 kindergartens of various types containing 77,200 children. There are 419 primary schools with 37,900 enrollment students and 205,700 students at school. There are 158 secondary schools with 49,000 enrollment students and 141,200 students at school. There are 5 special education schools with 95 enrollment students and 640 students at school. There are 42 secondary vocational education schools with 10,800 enrollment students

and 32,900 students at school. There are 13 colleges and universities with 51,900 enrollment students and 151,300 students at school.



## Health Care

Health care and birth control have maintained steady and rapid development. At the end of 2018, the total number of health care and birth control institutions in the city was 3,485, including 67 hospitals, 3,389 primary health care institutions, and 27 professional public health institutions, including 5 maternal and child health hospitals. There are 19,195 beds in medical and health institutions, including 14,207 in hospitals and 3,238 in primary health care institutions. The total number of health care and birth control personnel reached 28,346 in 2018, forming a complete public health and medical treatment system.







## People's Livelihood

This is a city that is enveloped in warmth and affection. Fulfilling the public's yearning for a better life is the goal of the government. It has vigorously developed social undertakings to ensure the improvement of people's livelihood. In 2018, the per capita disposable income of the city's residents was 24,555 yuan, an increase of 9.3% compared to the previous year. According to the permanent residence, the per capita disposable income of urban residents was 35,386 yuan, an increase of 7.9%; the per capita disposable income of rural residents was 13,719 yuan, an increase of 9.2%. Qinglong has achieved poverty alleviation with high success. We are making every effort to create a national health city. The public happiness index has been continuously improved. It has won the title of “the Most Caring City in China” and listed among the Top 20 Happiest Cities in China. It ranked 25 among “Top 100 Prefecture-level Cities of People's Livelihood Development in China”.







## Prospects

- Development Strategy
- Development Prospects
- Sail Far with Fair Wind

## Development Strategy

Forging the city with ecological balance

Strengthening the city by industry

Prospering the city by opening-up

Casting the city by civilization

## Development prospects

● By 2020, a comprehensive high-quality well-off society will be built;

● By 2030, a strong coastal city and beautiful port city will be built, and socialist modernization will be basically realized in advance;

● By 2040, a first-class international tourist city will initially be built, a modern strong socialist city will be built and the leap-forward improvement of Qinhuangdao's development quality and urban quality will be achieved.





## Sail Far with Fair Wind

The sea is vast with spring tides surging, and sail far with fair wind blowing. Many national strategy projects such as the “Belt and Road”, the coordinated development of Beijing-Tianjin-Hebei, the cooperation of Circum-Bohai Sea Economic Circle, the revitalization of the old industrial base in Northeast China, and the planning and construction of the Xiong’an New District are closely connected to Qinhuangdao, providing an unprecedented opportunity for Qinhuangdao to promote high-quality development. In the new era, more than 3 million citizens have embarked on a new journey to build the strong coastal city, beautiful port city, and international city. In the new era, through reform and opening up, Qinhuangdao is promising to welcome friends from home and abroad, embracing the world and striding towards a better tomorrow!





## Major Foreign-related Institutions

The Information Office of Qinhuangdao Municipal People's Government  
Tel: (0335) 3222217

The Overseas Chinese Affairs Office of Qinhuangdao Municipal People's Government  
Tel: (0335) 3652307

The Taiwan Affairs Office of Qinhuangdao Municipal People's Government  
Tel: (0335) 3220577

Qinhuangdao Foreign Affairs and Commerce Bureau  
Tel: (0335) 3433808

Qinhuangdao Tourism, Culture, Radio and Television Bureau  
Tel: (0335) 3661010

The Exit-Entry Administration Office of Qinhuangdao Municipal Public Security Bureau  
Tel: (0335) 3056506

The Management Committee of Qinhuangdao Economic and Technological Development Zone  
Tel: (0335) 3296643

The Management Committee of Beidaihe New District  
Tel: (0335) 3590000

Qinhuangdao Branch of China Council for the Promotion of International Trade  
Tel: (0335) 5918966

Qinhuangdao Returned Overseas Chinese Federation  
Tel: (0335) 3637340

Qinhuangdao Customs  
Tel: (0335) 8512195

Beidaihe Customs  
Tel: (0335) 5308799



Qinhuangdao Release



Love Qinhuangdao



Qinhuangdao Tourism



Dream Realizing in  
Qinhuangdao

For more information about Qinhuangdao, please click on:

1.Qinhuangdao Municipal Government

[www.qhd.gov.cn](http://www.qhd.gov.cn)

2.Qinhuangdao News Net

[www.qhdnews.com](http://www.qhdnews.com)

3.Qinhuangdao Media Net

[www.qhdcm.com](http://www.qhdcm.com)

4.Qinhuangdao Civilization Net

[qhd.wenming.cn](http://qhd.wenming.cn)

5.Qinhuangdao Economic and Technological Development Zone

[www.qetdz.com.cn](http://www.qetdz.com.cn)

6.China-Beidaihe New District

[www.bdhxq.gov.cn](http://www.bdhxq.gov.cn)

7.Qinhuangdao International Channel

[www.qhdnews.com](http://www.qhdnews.com)

# QINHUANGDAO CHINA 2019

## Editorial Board

Director: Chen Yuguo

Editors-in-Chief: Gu Yunhua

Zhang Jianjun

Editors: Liu Haibin

Cui Lisheng

Translators: Shao Lijun

Hu Zhili

Luo Xuefeng

Proofreaders: Paula Adams (the U.S.)

Tim (the U.S.)

Graphic Designer: Zhao Zhongji

Photos courtesy of Qinhuangdao

Photographers Association



